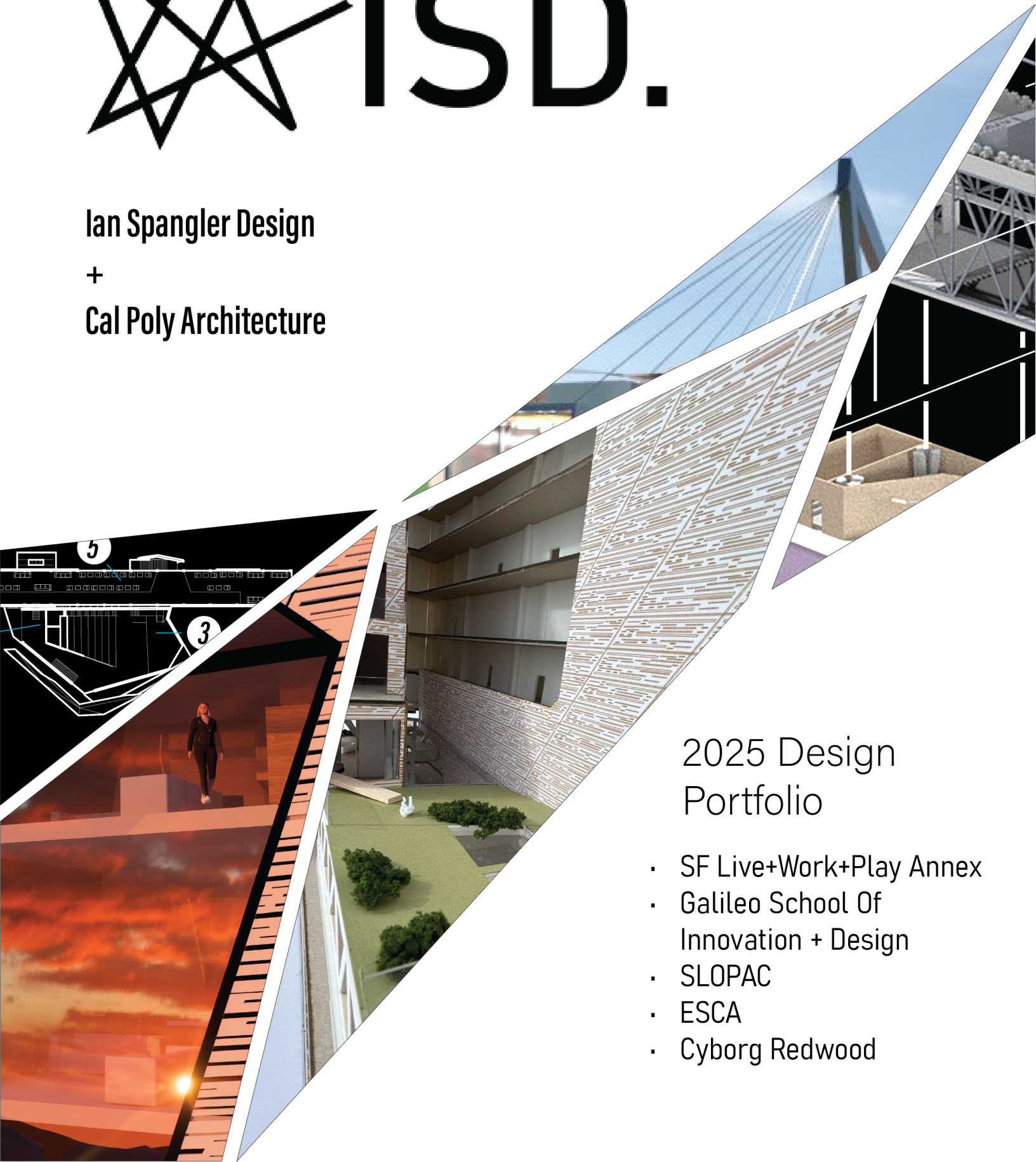


# ISD.

Ian Spangler Design

+

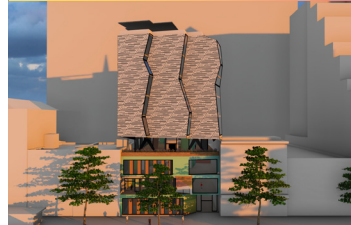
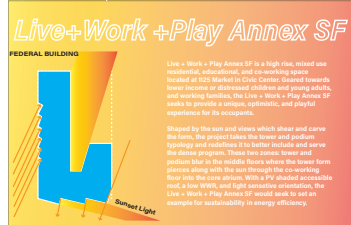
Cal Poly Architecture



## 2025 Design Portfolio

- SF Live+Work+Play Annex
- Galileo School Of Innovation + Design
- SLOPAC
- ESCA
- Cyborg Redwood



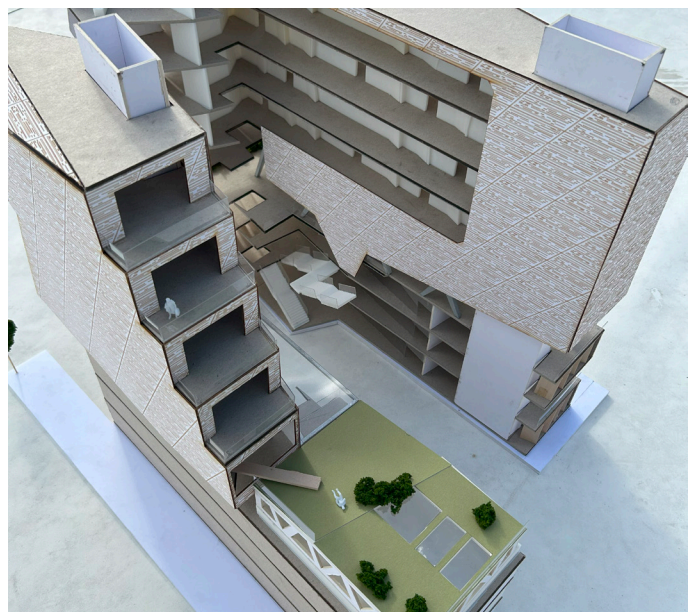


Longitudinal Section Scale: 1/16"=1'-0"

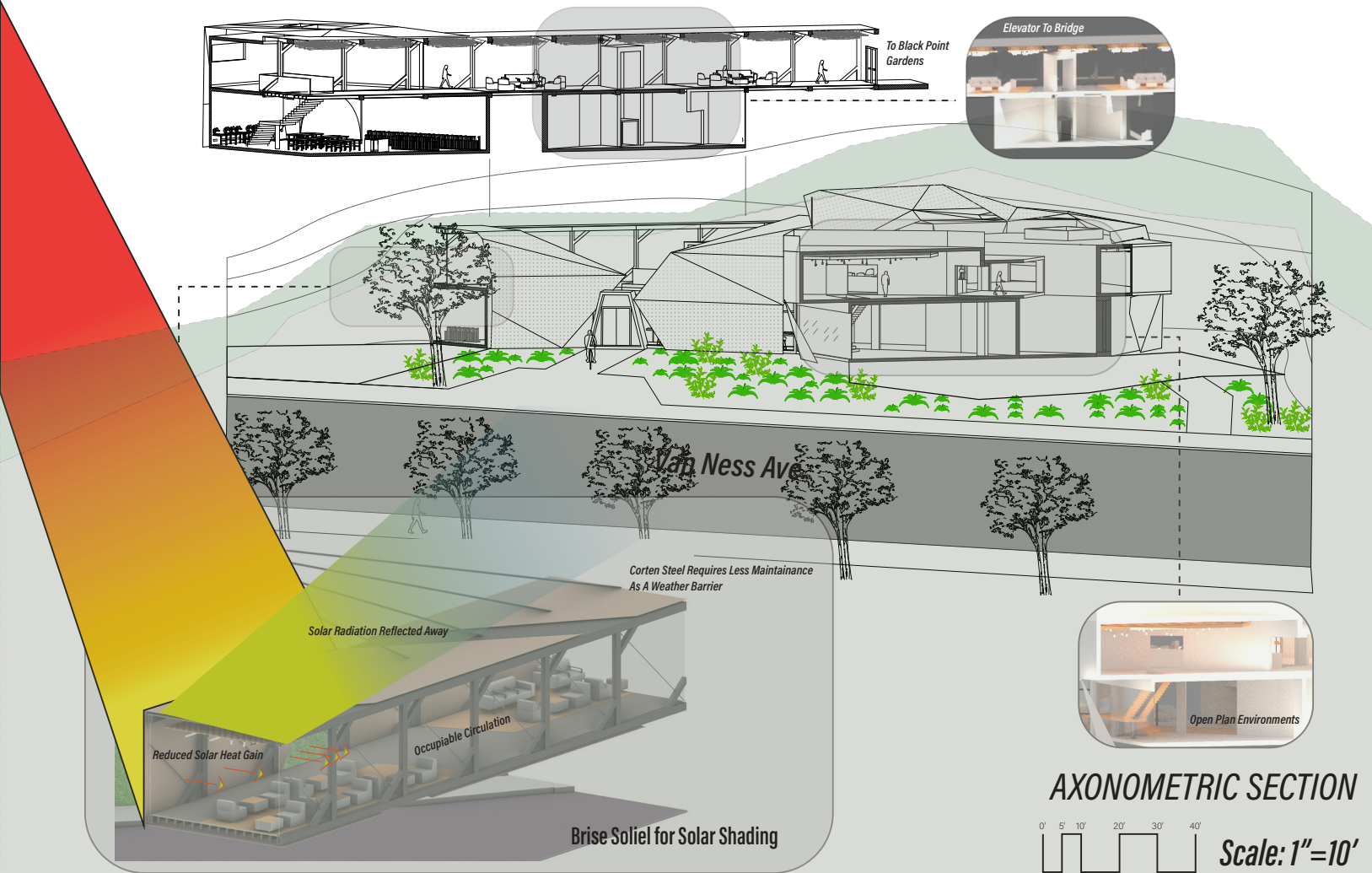




<https://youtu.be/8E0fojqI80c>



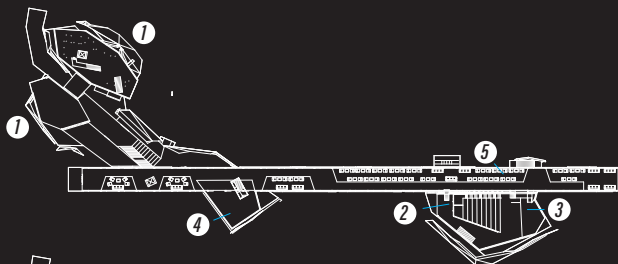




FLOOR 3



FLOOR 2



FLOOR 1



## GALILEO DESIGN + INNOVATION ACADEMY

Aquatic Park, SF CA

- 1 ————— Courtyard/Terrace
- 2 ————— Restrooms
- 3 ————— Auditorium
- 4 ————— Makerspace/Shop
- 5 ————— Occupiable Circulation
- 6 ————— Offices
- 7 ————— Studio
- 8 ————— Cafe

*Circulation as Pedagogy*



*Building As Teacher*



*Dynamic & Innovative Learning*

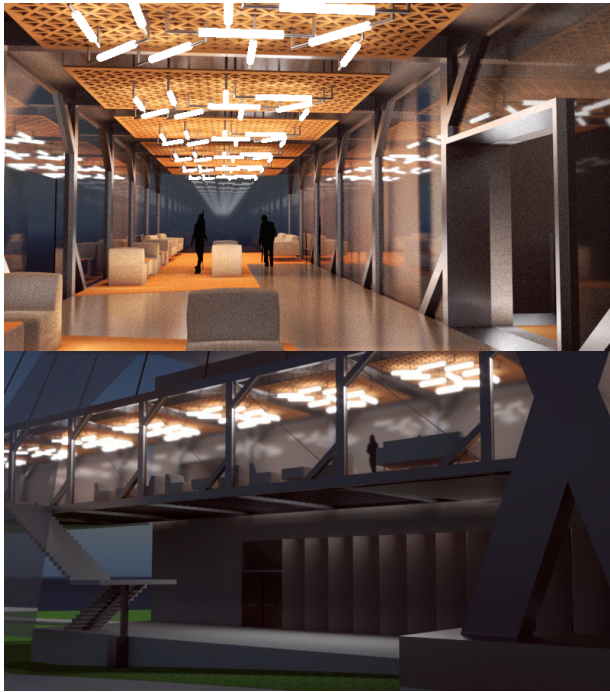
**PLANS**

Scale 1"=32'-0"

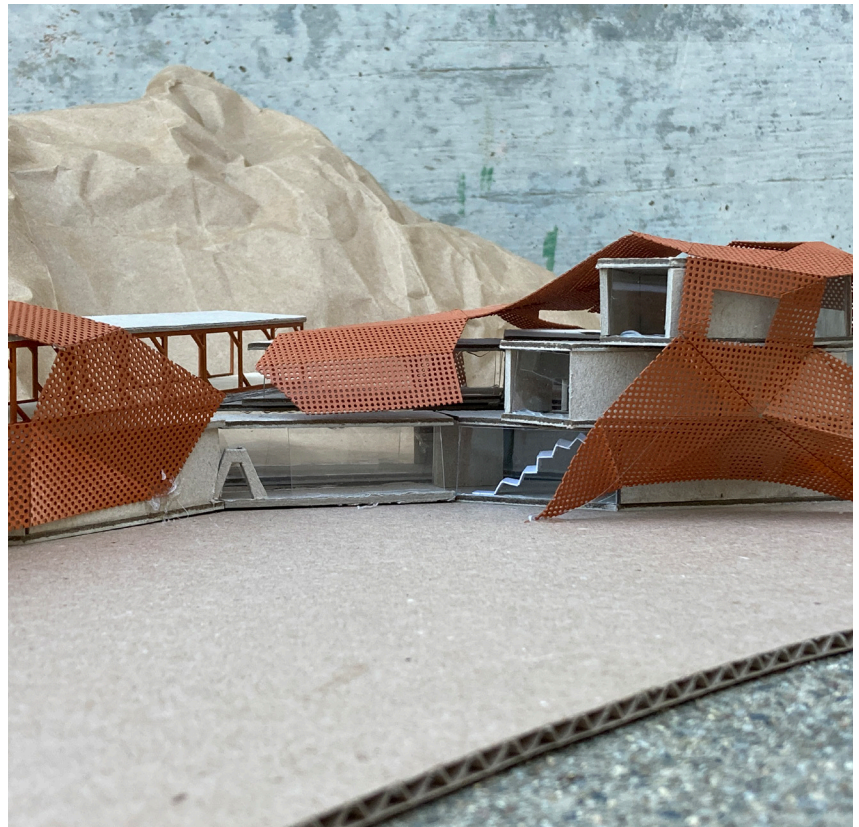
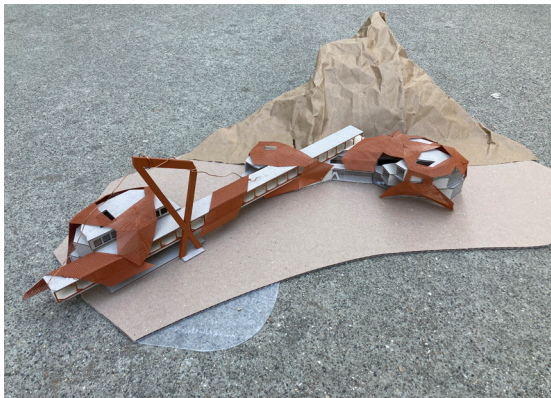
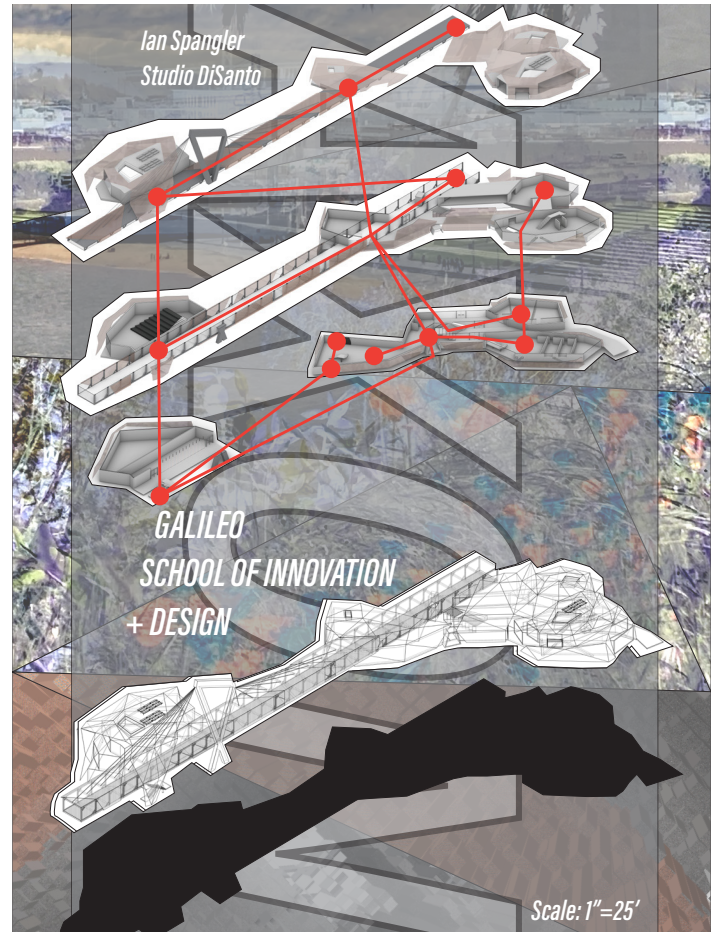


Galileo Design + Innovation Academy

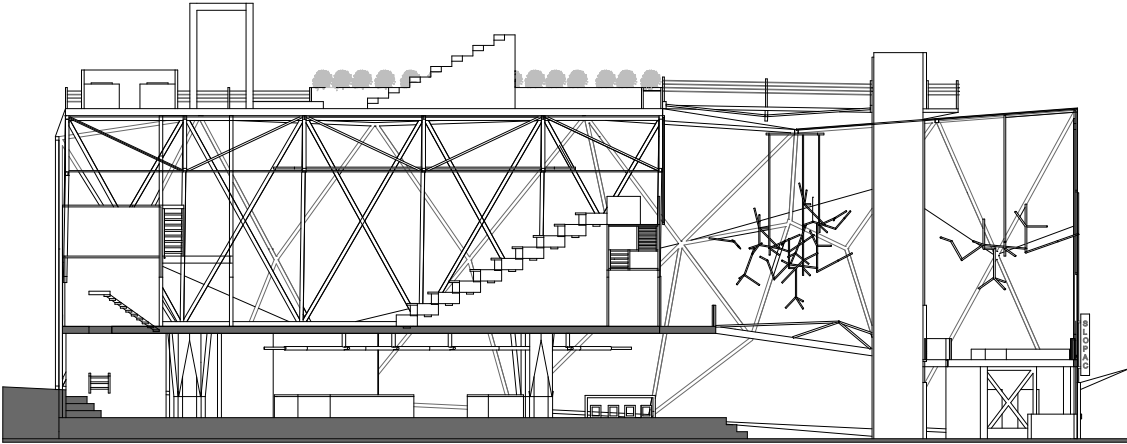
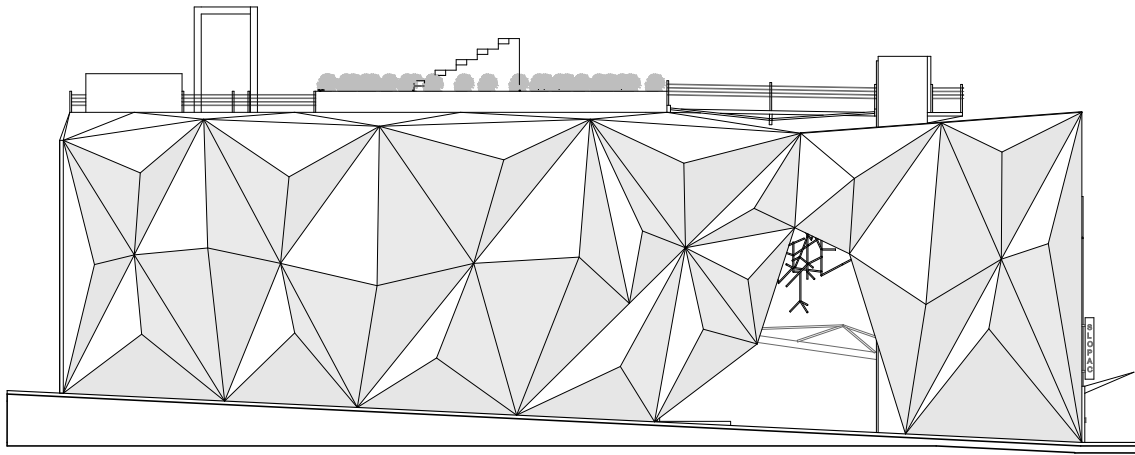




**"Occupiable Circulation"** is the concept that makes Galileo Design + Innovation Academy a living machine for cross pollination, learning, and discovery. The architecture is facilitator, administrator and professor...

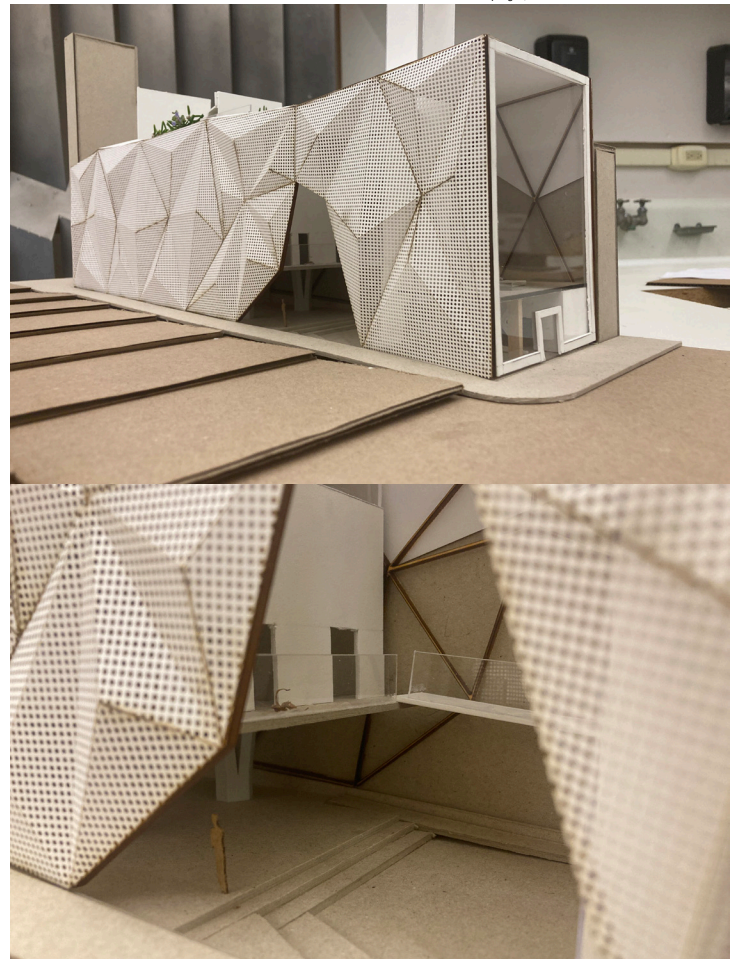
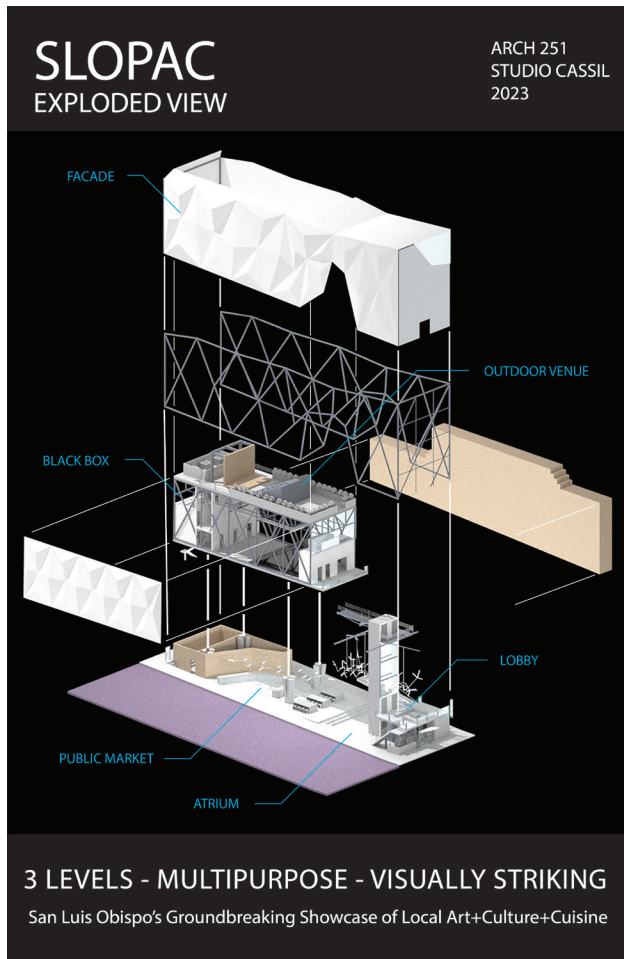






ARCH 251 MORRO ST ELEVATION + SECTION

SCALE 1/8"=1'-0"  
Ian Spangler, Studio Cassil Fall 2023





ASSORTED WORKS

